

## Site-Wall Barrier

---

Specification Sheet  
WFS151200

01/04/25

**safesite**<sup>®</sup>  
F A C I L I T I E S



## Site-Wall Barrier

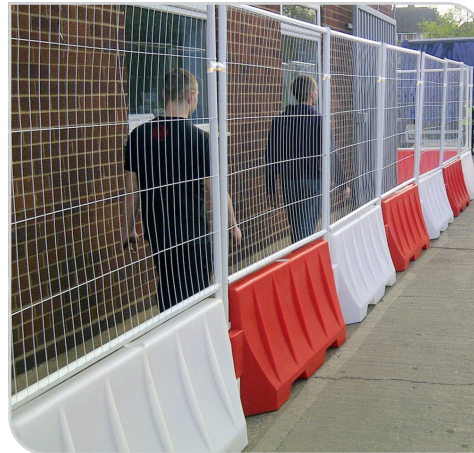
Available for purchase or hire and delivered nationwide, our heavy duty water filled Site-Wall barriers are ideal for ensuring security at construction sites, outdoor events and more.

Our durable, UV stabilised HDPE Site-Wall barriers are easy to deploy and move when empty, yet weigh a sturdy third of a ton (300kg) each when used with fencing and filled with water (sand can be used alternatively, if preferred).

The ingenious interlocking design of these barriers allows one continuous, and therefore less vulnerable wall to be constructed, even around corners without any compromise in strength.



Line of Site-Wall Barriers



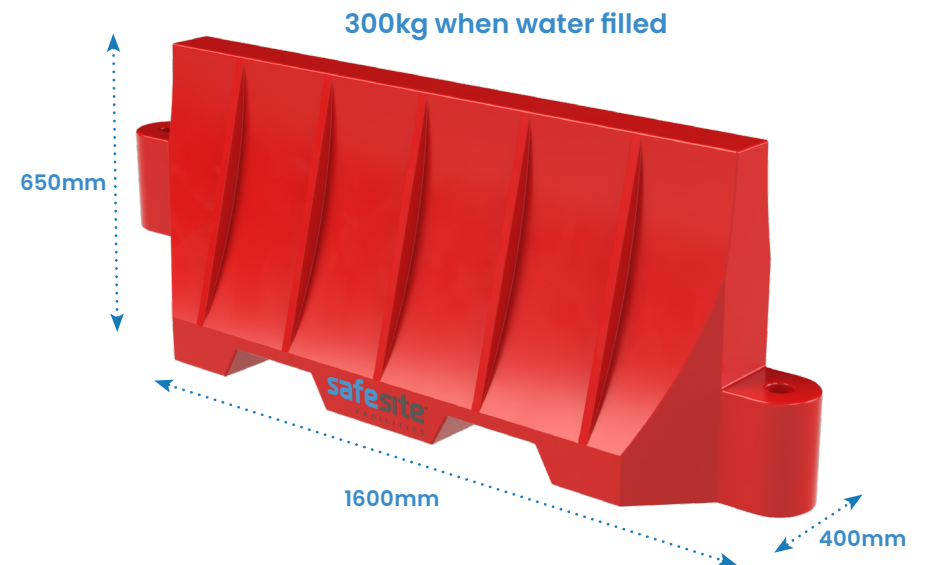
Site-Wall Barrier with Mesh Fence

### Site-Wall Barrier Specification

Description	Size (mm)	Weight (kg)	Weight Full (kg)
WFS151200 - Site-Wall	H650 x W1600 x D400	14	300

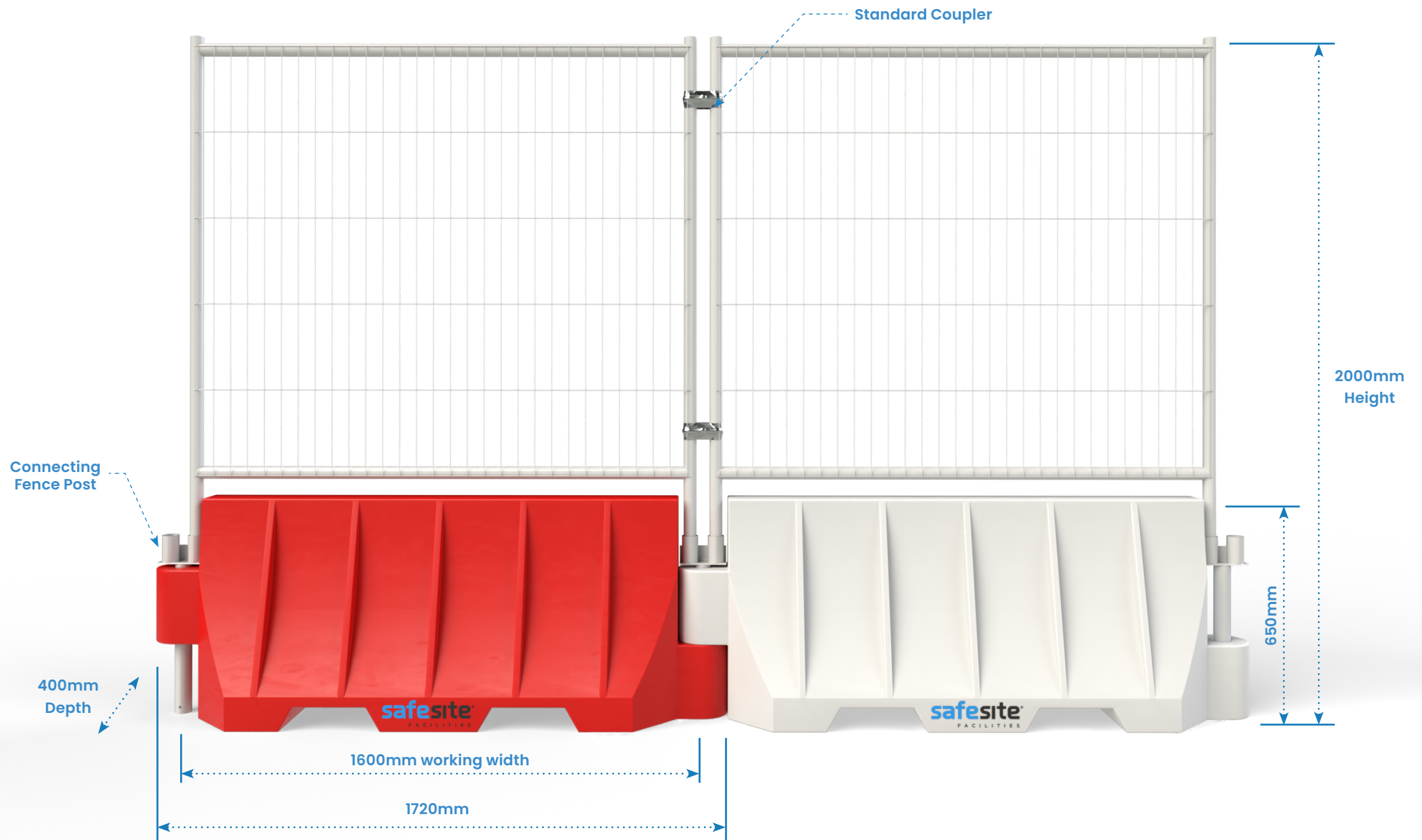
## Key Features

- 300kg when filled with water
- Allows for angles or curves
- Can be used with mesh fence total height of 1.2m or 2m
- Interlocking design
- UV stabilised HDPE
- Easy to handle and install
- Creates a safe boundary



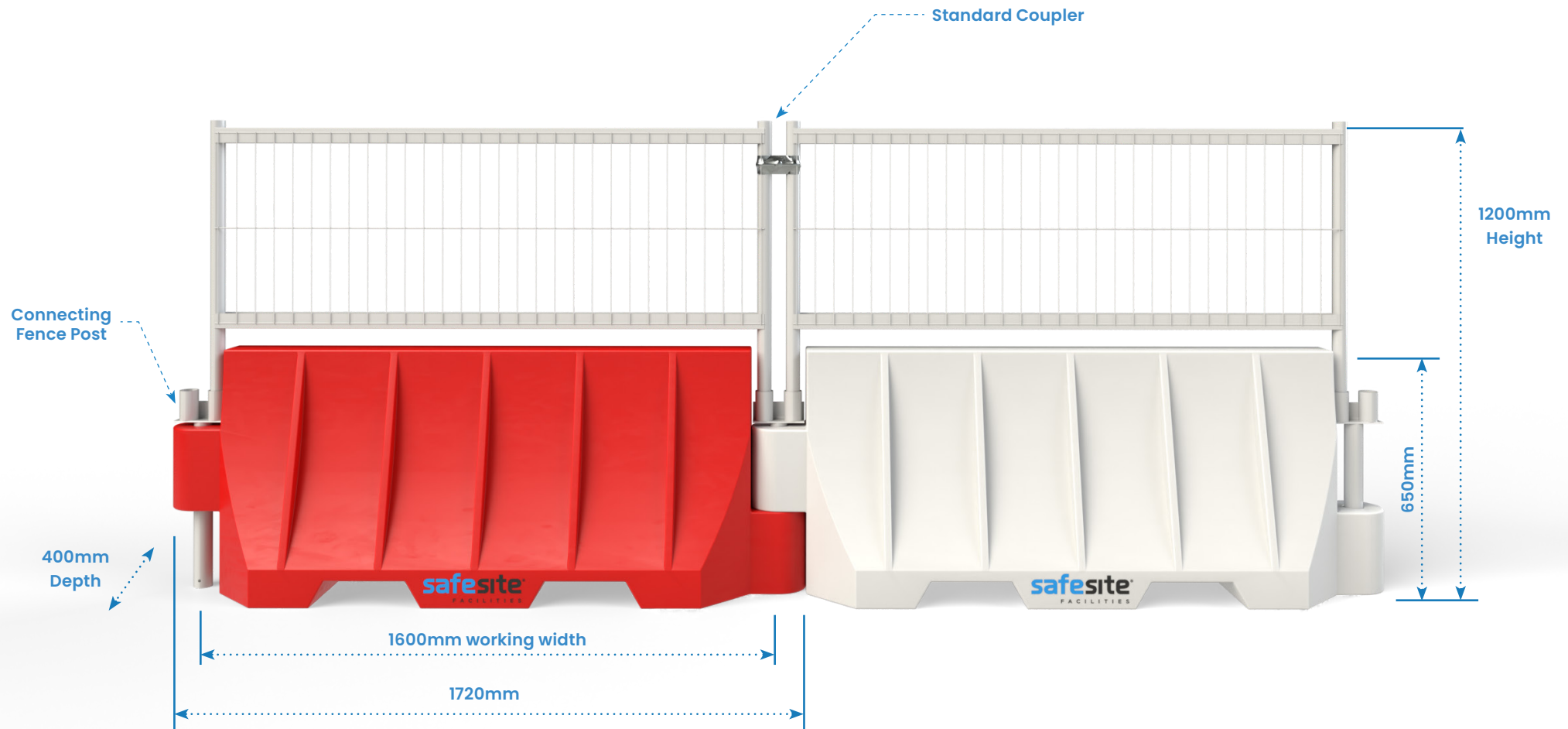


## Technical Details





## Technical Details





## Installation parts

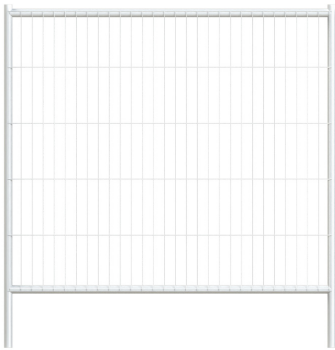
### Site-Wall Barrier – Measurements in mm

Please see below pictures and quantities of additional parts you will receive with each Site-Wall Barrier. The parts below are an essential safety requirement when installing the Site-Wall correctly.

1

#### Site-Wall 2m Mesh Panel WFS151220

Quantity: 1

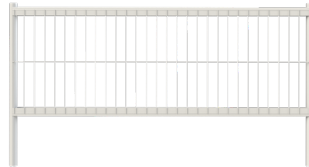


Size (mm)	Weight (kg)
H1585 x W1558 x D38	7

2

#### Site-Wall 1.2m Pedestrian Mesh Panel WFS151225

Quantity: 1



Size (mm)	Weight (kg)
H815 x W1558 x D38	5.6

3

#### Connecting Fence Post WFS151230

Quantity: 1

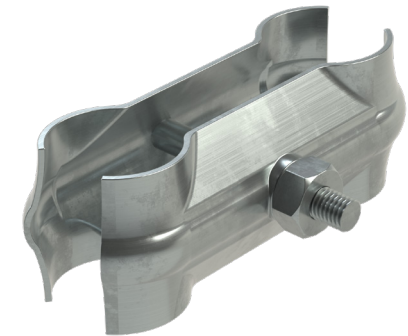


Size (mm)	Weight (kg)
H534 x W140 x D50	2.4

4

#### Standard Coupler TFS100500

Quantity: 1 (per 1.2m panel)  
Quantity: 2 (per 2m panel)



Size (mm)	Weight (kg)
H50 x W130 x D52	0.2